

Seqrite Encryption Manager update guidelines before applying Windows Update (20H1)

Microsoft is about to release a new update for Windows 10 operating systems, called Windows 10 May 2020 Update also known as Version 2004 and codenamed "20H1" likely to be available by end of May 2020.

Windows 10 20H1 updates brings in multiple new features, enhancement and fixes.

Click [here](#) for more information.

In our internal validations with a pre-release version of Windows 10 20H1 update, we observed the system with existing clients of Seqrite Encryption Manager (SEM) 1.2.x goes in the repair mode after applying the latest Windows 20H1 Updates.

To avoid the above described situation, Seqrite has released an important update which will make the existing Windows 10 SEM clients and server compatible with the Windows 20H1.

This document describes steps to apply this important SEM update and some precautionary measures to be taken before applying Windows 10 20 H1 update.

There are two mandatory steps to be performed before applying Windows 10 20H1 update:

1. [Update your SEM 1.2.x server with the released update](#)
2. [After successful update configure SEM Policies](#)

Update your SEM 1.2.x server with the released update

You can apply the update using one of the following methods:

- [Through Seqrite Encryption Manager](#)
- [Through Seqrite Encryption Manager Installer](#)

Through Seqrite Encryption Manager

1. **Login** to SEM Server as an **Administrator**.
2. In title bar, click on **Administration**.
3. In the left pane, click on **Software update**.
4. Click on **Check and Download Now** button. In older version (1.2.0), click on **Check Now** button.
5. The updates will be displayed, in the following format

Software	Version	Date	Latest Version
SEM Agent	1.2.0.6	06 May 2020, 18:25	v. 1.2.0.7 is available
Seqrite Volume Encryption	1.2.0.13	06 May 2020, 18:25	v. 1.2.0.15 is available
SEM Server	1.2.2.0	06 May 2020, 18:25	v. 1.2.2.1 is available (re-login to SEM Console is required)

6. The **Latest Version** column will show the versions of the modules.
7. Click on **Update Now** button, the following popup will be shown with the update information

Update information ✕

SEM server will now be updated.

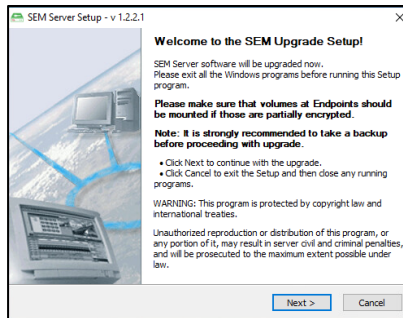
During update, SEM server will not be available for client computers until the server resumes the services.

Update

8. Click on **Update**.
SEM Server will update existing Server silently. Once the update is applied successfully, Seqrite Encryption Manager version will be updated from **1.2.x to 1.2.2.1**.
9. Refresh the web console after few minutes (approximately after 5-7 minutes) to login to the updated SEM Server.

Through Seqrite Encryption Manager Installer

1. Download Seqrite Encryption Manager installer from [here](#)
2. Run downloaded installer on the existing SEM Server.
3. In the SEM Upgrade setup dialog, click **Next**.



4. On the License agreement dialog, select **I accept the Agreement** and **consent** check box and click **Next**.
5. In SEM setup dialog, click **Finish**, to start the update.
Once the Seqrite Encryption Manager is updated successfully, Seqrite Encryption Manager version will be upgraded from **1.2.x to 1.2.2.1**.
6. To login to SEM Console, click **Start Server**.

Note:

SEM clients will be upgraded to latest version automatically, whenever client communicates with server after server update.

After successful update configure SEM Policies

Configure the SEM policies as described below before applying Windows 10 20H1 update.

- If the policy is set as Encrypt, then follow the [Encrypted Policy procedure](#)
- If the policy is set as Manage Locally, then follow the [Manage Locally Policy procedure](#)

Encrypted Policy procedure

If the policy is set as Encrypted, then perform the following steps:

1. Login to SEM console as **Administrator**
2. Click **Seqrite Volume Encryption: Encryption Policies**, (*refer the screenshot below*)
3. In Edit Policy dialog box, clear the **Encrypt volumes without driver letter (mount points)** check box. (*refer the screenshot below*)

Dialog box titled "Edit policy" with a close button (X) in the top right corner. The form contains the following fields and options:

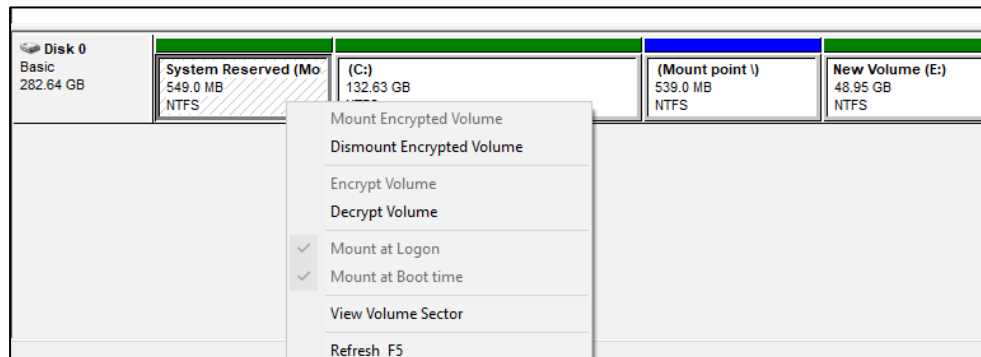
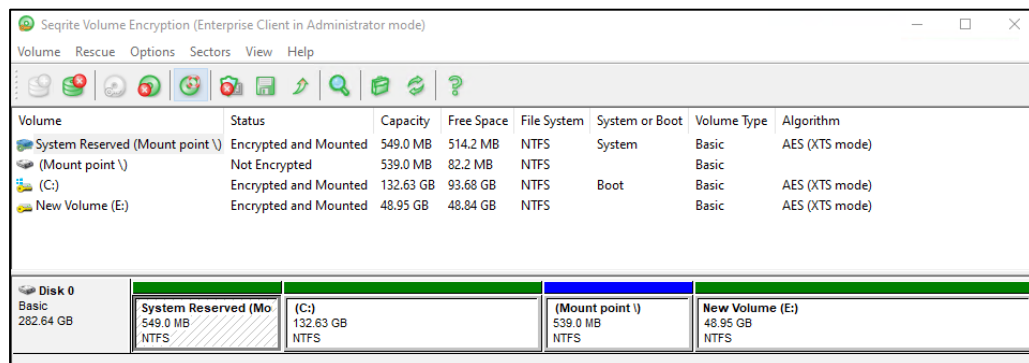
- Policy name:** Text input field containing "Encrypt fixed disks".
- Fixed drives action:** Dropdown menu showing "Encrypt".
- Encrypt volumes without drive letter (mount points):** A checked checkbox, highlighted with a red rectangular box.
- Removable Devices:** A checked checkbox labeled "Encrypt". Below it are two radio button options: "Read-only access if media is not encrypted" (unselected) and "Block access if media is not encrypted" (selected).
- Encryption Algorithm:** Dropdown menu showing "AES".
- Single Sign On action:** Dropdown menu showing "User Control".
- Note:** "Note: If two users use the same pre-boot password, then the first user's Single Sign On gets dissociated."
- Buttons:** "Delete" (red) and "Save" (blue) buttons at the bottom right.

4. Do not change any other option (*Recommended*)
5. Repeat the above steps [1-4] for all the **Encrypt** policies

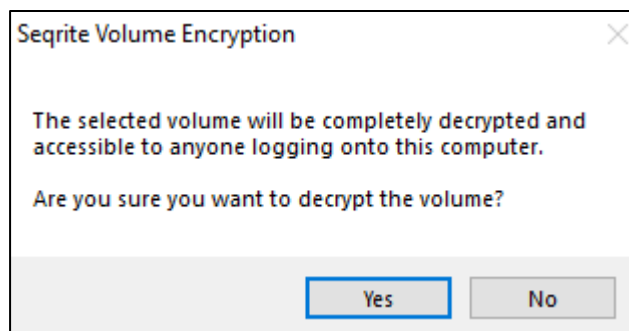
Manage Locally Policy procedure

Identify the endpoints on which the Manage Locally policy is applied. Before the Windows update, first decrypt the mount points. Perform the following steps:

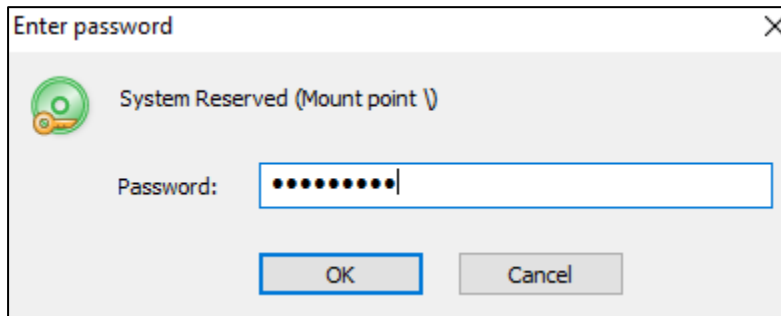
1. On the endpoint, go to Start > Seqrite Volume Encryption folder.
2. Open **Seqrite Volume Encryption** application.
3. If the **System Reserved (Mount Point)** is encrypted, then right-click on the encrypted volume (mount point) and select **Decrypt Volume** (*refer screenshot below*)



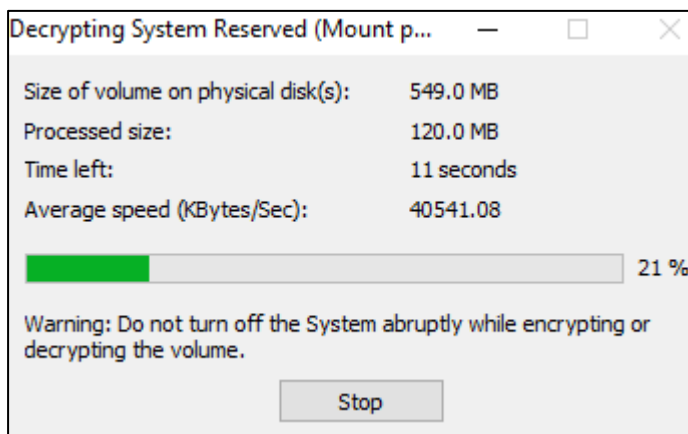
4. The confirmation dialog is shown, Click **Yes** to proceed.



5. The password dialog is show, enter the password and click **OK**.



Decryption starts for the selected volume.



6. Success message is displayed after successful decryption, click **OK** to exit.

